

CROSSINGS

Newsletter of Railroad Construction Company, Inc. and The RCC Family of Companies

Volume 16.1

We're celebrating . . .



. . . because of you!

Inside this issue:

	<u>Page</u>		<u>Page</u>		<u>Page</u>
<i>Remembering Vinnie DeLuccia</i>	2	<i>Railroad Construction Celebrates 85 Years</i>	6, 7	<i>2011 Scholarship Winners</i>	10
<u><i>Recently Awarded Projects:</i></u>		<u><i>Keeping Up The Good Work:</i></u>		<i>RCC Co-Workers Volunteering in Our Local Community</i>	10
- NJTA Bridge Repairs & Resurfacing MP126-172 . . .	3	- PANYNJ: WTC Harrison Rail Transfer Yard	8	<i>Co-Worker Profiles</i>	11
- Pysmian: Hudson Transmission Project	3	- Con Edison: Harlem River Tunnel Fit-Out	8		
<u><i>Highlights from The RCC Family of Companies:</i></u>		<u><i>Jobs Well Done:</i></u>			
- RCC Fabricators, Inc.	4	- PANYNJ: Call In Contracts	9		
- Beach Electric Company, Inc.	4	<i>85th Anniversary Logo Contest</i>	9		
- RCC Builders & Developers, Inc.	5	<i>Congratulations</i>	9		



Remembering One of Our Own

Vincent DeLuccia

It is with heavy hearts and great sadness that we announce the passing of Vincent DeLuccia. Vinnie was born on March 27, 1929 in Paterson, NJ, and died Sunday, March 20, 2011 at the age of 81.



Vinnie served in the Army, and was part of the **Railroad Construction Company** family from the age of 15 until his first retirement in 1990... and his second retirement in 2005.....and his real retirement in 2008. So, basically, Vinnie worked full time for 46 years and part time for 18 years - for a total of 64 years!

When Vinnie began at **Railroad Construction**, he was a water boy for two summers and his nickname, naturally, was "The Kid". As the years passed, that nickname affectionately changed to "Uncle Vinnie" - probably because he was, in so many ways, like an uncle to the younger men and women he worked with. Vinnie was always ready to give a word of advice and willing to help out anyone who needed help.

In 1947, he started working on the tracks. Vinnie once shared, "When I started, in the hot weather, the summer, there were about 30 people working. In January and February, we had about 10-12 guys working....eight men used to pick up the rails and put them on their shoulders... the ties we used to move with a pushcart, put 40 ties on and push it along....in the places where you couldn't have flames, we used to cut the rail with a good hacksaw blade....we even drilled holes in the rail by hand. Valley and I, one day, drilled 28 holes by hand. (Valentino ("Valley") was Al, Tony and Joe Daloisio's brother and the father of Jimmy Daloisio, who retired in 2010.) On one job, we used to put the gate down and the seats down, and



move frogs in the back of a station wagon. We used to pull out 200 ties a day, by hand....now a machine can do that in an hour...we have equipment now that I never thought I'd see."

During his years at **Railroad Construction**, Vinnie worked with three generations of the Daloisio family. Reflecting on his time at **Railroad Construction**, Vinnie said: "Out of all the years I've been here, I could never imagine working anyplace else. They gave it a good name when they said family. I don't think you could've found a better place to work. I even come around here during the day when I have nothing else to do. It's like a force of habit."

Vinnie never married or had kids of his own, but his family stretched far and wide. For a very long time, anyone who stopped by, or worked for or with **Railroad Construction**, got to meet Vinnie. A better ambassador, or storyteller, could not be found.

Vinnie's life serves as a reminder that where we work is often more important to us than what we do. At its best, it is about friends. It is about family. We will always remember Vinnie at **Railroad Construction** and his stories will continue to be shared for many years to come.



Did you know that.

If you are an average American, you will spend an average of six months waiting at a red light over the course of your lifetime!

Recently Awarded

NJ Turnpike Authority: Garden State Parkway Bridge Repairs and Resurfacing MP126-172

Harrison, NJ

Railroad Construction Co., Inc., was recently awarded a project by the NJ Turnpike Authority for the milling and resurfacing of bridge decks, substructure repair, and removal and replacement of bearings on the Garden State Parkway from MP 126 to MP 172. Crews began work on May 2, 2011 and are scheduled to be completed by the end of the year.

This project spreads over 24 different locations between mileposts 126.0 and 172.0. At each of these 24 locations, **Railroad Construction** is required to repair existing bridge decks and complete repairs on substructure including bearing replacement where needed. We have started work with the bridge decks in Irvington, New Jersey. The work on the bearing replacement will start in mid July.

Special thanks go out to John Knuth of the *New Jersey Turnpike Authority Engineering Department*, Joe Librizzi of the *New Jersey Turnpike Maintenance Division*, the *New Jersey State Police Garden State Parkway Construction Division* for their continued



support and cooperation throughout this project. We would also like to thank all of our suppliers and subcontractors for their cooperation and hard work in making this project an ongoing success. Major material suppliers for this project include: *Barker Steel, OS Brown, Nobel Equipment, and Traffic Safety Services*. Subcontractors include: *Roman Asphalt, M. L. Ruberton and Zone Striping*.

Hudson Transmission Partners: Hudson Transmission Cable Project

New York, NY / Edgewater & Ridgefield Park, NJ

Railroad Construction Co., Inc. was awarded this project by the general contractor, *Prysmian Cable Systems*, who are based in Italy. When completed, the project will supply New York City with an additional five percent of electrical capacity, which will be supplied from the *PSE&G* power plant located in Ridgefield Park, NJ, using renewable resource power generation. *Prysmian* will be installing the marine portion of cable between the two upland portions of **Railroad Construction's** work using the cable laying vessel, "Giulio Verne", to bury a submarine cable 15 foot deep into the bed of the Hudson River.

The **Railroad Construction** upland portion of the Hudson Transmission project will have work being performed on both the New York and New Jersey sides of the Hudson River. The anticipated project completion is August of 2012.

The New York City side of this project will consist of the excavation and installation of approximately 1,000 lineal feet of multiple conduit duct bank, which will run from 52nd street to the *Con Edison* substation located between 49th Street and 50th Street along the West Side Highway (12th Avenue). There will be two underground structures installed, one of which will be a splice vault for the splicing of the submarine cable, which will be placed by *Prysmian*, and the second vault, which will house pressurized fluid storage

tanks and control systems used to pressurize the submarine cable with biodegradable oil to prevent the infiltration of water into the cable.

The New Jersey portion of the contract consists of approximately three miles of reinforced and selectively bedded duct bank. The proposed alignment begins at the submarine cable termination in Edgewater, NJ, and terminates at the *PSE&G* Bergen Substation in Ridgefield, NJ. A majority of the route will be open trench excavation through various rights of way and private properties.



A Horizontal Directional Drill will be utilized to complete multiple 300 foot crossings of River Road in Edgewater. The Horizontal Directional Drill will again be utilized to construct a 1,400 foot long, 45 foot deep crossing of Bellman's Creek and a *CSXT* right of way in North Bergen. The New Jersey duct bank will also require an additional pile-supported fluid vault, as well as six manholes and a transition pit for splice locations. Another remarkable feature of the project is a one mile segment to be constructed in an inactive rail tunnel designated for future reactivation.

Railroad Construction would like to thank John Ostrowski, Wilhelm Napier and PJ Glavin of *Prysmian Cable Systems* and Robert J. Curley, P.E. of *Birdsall Services Group*. In addition, we would also like to thank our subcontractors, not limited to, *Waters & Bugbee* and *KMETZ, Inc.*

RCC Fabricators, Inc.

NJ Turnpike Authority: Widening & Rehabilitation of Bass River Bridge MP51.9

RCC Fabricators, Inc. was recently awarded a contract with *Northeast Remsco* for the *NJ Turnpike Authority's* Bass River Bridge I. **RCC Fabricators** is contracted to fabricate and deliver the 100'-0" (+) Steel Bridge Stringers weighing approximately 214 tons. Additionally, **RCC Fabricators** is to supply approximately 50 tons of additional items, which will include Live Load Continuity Retrofit Assemblies, Cross Bracing,



Stringer Bracing, Bridge Bearing Bolsters and miscellaneous hardware. Currently, the bridge girders are scheduled to be delivered the early part of next year; however, with **RCC Fabricators'** large fabrication facility and acreage, our work will be fabricated and stored at our Southampton, NJ plant until their placement will be needed. We look forward to another successful project that will assist in the re-building of our infrastructure.

Thank you to Drew Valkos from Northeast Remsco for their continued confidence in us.

Atlantic City Expressway Overhead Sign Structures Electronic Toll Collection Upgrades

RCC Fabricators, Inc. recently oversaw and completed the emergency fabrication of six overhead sign structures for *South State, Inc.* The project consisted of two Hot Dipped Galvanized Mono-Tube structures 24'-6" high x 65'-6" long, and four Hot Dipped Galvanized Truss Overhead Sign Structures ranging from 85'-0" to 100'-0"; totaling approximately 74 tons.



We met the schedule head-on and successfully completed the project with the dedication of our project management and production team. **RCC Fabricators** pulled no punches when taking on this project and was committed to bring it to a victorious completion by utilizing an arsenal of in-house talent and vendors.

A special thank you goes out to *Division Five* for their expertise in preparing the drawings in a timely manner. We would also like to thank our material suppliers who played a key role in the project: *Eagle Tubular, Metals USA, Infra-metals,*

The difficult challenge, presented by the Owner, *South Jersey Transportation Authority*, was preparing drawings, fabricating, galvanizing and delivering all six structures in a two month period.

East Coast Steel, Haydon Bolt and Fastenal. Lastly, we would like to thank Jeff Dumas at *South State, Inc.* for his ability to continually move the project along and produce answers when needed as this was 'key' in obtaining the intended completion date.

Beach Electric Company, Inc.

Hoffmann-La Roche Building 115 Multi Purpose Computer Room

Nutley, NJ

Beach Electric has performed projects at the *Hoffmann-La Roche (Roche)* facility in Nutley for many years. The nature of the *Roche* mission provides projects that are varied and challenging. *Roche* requirements for a high degree of safety accountability and craftsmanship are addressed through a long working relationship with our site foremen and **The RCC Family of Companies** Safety Department. This project presented technical and logistical challenges that were handled with professionalism by our crews.

The Roche B115 MPCR project consolidated their computer operations. It involved large redundant power sources including normal, generator and UPS feeders all interlocked and electronically monitored and coordinated. ASCO transfer switches are used to switch between power sources. Several power distribution units



Overview photo of the Hoffmann-La Roche Nutley campus

are used to distribute the normal and emergency power to the computer equipment. Cooling systems monitor and regulate temperature to protect the sensitive equipment from overheating. Leak detection systems under the raised computer room floor protect against water damage from a cooling system failure. Extensive fire alarm and security systems were also installed. This project presented technical and logistical challenges that were handled by our foremen, Eric Happel and Will Reynolds, and their crew.

Beach Electric would like to thank Dean Gaffney and Jeff Vail of *Sordoni Construction Co.* for their coordination between the customer, trades and vendors. Our major vendors, *Samson Electric* and *Warshauer Electric*, are due thanks for competitive pricing and attention to delivery schedules. Our appreciation also goes to Behram Irani, Mark Anema and Dave Meharg of *Hoffmann-La Roche* for their confidence in **Beach Electric**.

Beach Electric Company, Inc.

NJ Turnpike Authority: Northern Turnpike Bridge Deck Reconstruction - Milepost 83.0 to 122.0 and the Newark Bay-Hudson County Extension

Beach Electric was selected by *Railroad Construction* as the electrical subcontractor for their Northern Turnpike Bridge Deck Reconstruction project for the *NJ Turnpike Authority*.

Beach Electric is providing temporary wiring for roadway lighting while the bridge deck is being demolished and rebuilt. Conduits, junction boxes and wiring are being installed in the new parapet as it is completed. As sections are finished, the temporary lighting is removed and new roadway lighting fixtures are installed. With the west side of the project nearing completion, we are presently preparing to move our operation to the east side.



A total of approximately 16,000 feet of three-inch galvanized steel conduit and 35,000 feet of wire, as well as 38 roadway lighting fixtures will have been installed by the time this project is complete. This project is presenting logistical challenges that are being handled with hard work and professionalism. The day-to-day

installation and site issues are being handled efficiently by our jobsite foreman, Mike Rosta, and crew.

Beach Electric would like to thank *Railroad Construction* for their confidence in choosing us to help them build this challenging project.

RCC Builders & Developers, Inc.

Eva's Clinic, Kitchen & Dining Hall Expansion

Paterson, NJ

RCC Builders & Developers, Inc. is in the final stages of completing the new addition to the *Eva's Village* enhancement. The project is a three story, 14,550 square foot masonry addition, which will house their expanded primary care clinic on the first floor, a kitchen and dining hall expansion on the second level and expanded social area, meeting rooms and gym on the top floor. The façade has been constructed to match the existing building that it expands.

The project scope involved underpinning existing structures on three sides of the new construction, excavating and pouring concrete footing and foundations for the basement, masonry walls and concrete precast plank for floors two and three and topped with a combination of metal structural trusses for the sloped roofs and a metal flat roof system. There will be a new covered compactor area and a much need covered loading dock.

RCC Builders & Developers, Inc. would like to extend our thanks to Sister Gloria Perez, Marie Reger, Curtis Carson and the Board of Directors of *Eva's Village*; Ben and Matt Horten of *Ben Horten Architectural & Design*; Richard Christie and Yan Chen of *Christie Engineering*; Milton Azous of *Innovative Engineering*; and the *City of Paterson Community Development*.

Additional thanks to the subcontractors who participated in the project including *PSI Concrete & Masonry*, *Say-Core*, *K & D Ungarini*, *Cipollini Roofing*, *Academy Glass*, *All-Span*, *Able Door*,



Central Jersey Construction & Drywall, *P & N Mechanical*, *Malone Fire Protection*, *Edison Heating & Cooling*, *Precision Line Electric*, *Modern Floors*, *OK Sales*, *Mastertouch Painting*, *Patterson Dental* and *Payton Elevator*. Also, great thanks to our suppliers including *County Concrete*, *Gaeta Recycling*, *Mr. John*, *Elmwood Supply* and *Sandy Hill Building Supply*.

We are pleased to be participating with *Eva's Village* in their mission: *To feed the hungry, shelter the homeless, treat the addicted, and provide medical care to the poor, with respect for the human dignity of each individual*. This project will aid their mission in all of the above.

Railroad Construction Celebrates 85 Years!

We are proud to announce that 2011 marks the 85th anniversary of **Railroad Construction Company (RCC)**!

In 1926, Joseph Daloisio, Sr. (1st generation) founded **Railroad Construction Company** and started performing railroad track repairs after leaving his job at the *Erie Lackawanna Railroad Company*. From 1926 to 1942, **RCC** operated out of a small office next to the Daloisio home on Summer Street in Paterson, NJ. Al Daloisio, Sr. (2nd generation) soon joined his father and took over the reigns of **RCC** with the help of his brother, Tony, and sister, Mary Daloisio Falcione. **RCC** moved to our current Grove Street location in the 1940s. With a 1941 project for the *Todd Shipyards* in Brooklyn, NY, for \$25,000, Al Daloisio, Sr. began to lead **RCC** into new territory with larger contracts. As the contracts began to grow, so did the company. By 1970, we were performing work for the *Hunts Point Terminal* in the Bronx, NY, for a contract price of \$507,412.

In 1983, Al Daloisio, Jr. (3rd generation) took over as President of **RCC**. As the company grew in the 1980s, **RCC** branched out into excavation, drainage and site work by adding co-workers with expertise in those areas, taking on more diverse projects and entering into the heavy-highway sector as a general contractor. In 1984, we completed the *New Jersey Transit Newark City Subway Rehabilitation* valued at \$6,222,800; and in 1988, **RCC** teamed up with *Hess Brothers, Inc.* on the *PATH Harrison Rail Maintenance Facility* on a contract for \$26,202,000.

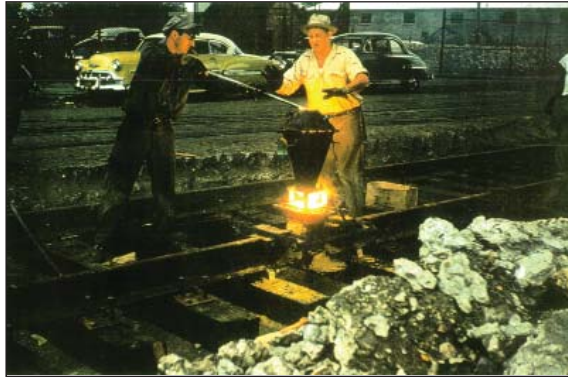
Originally established to provide New Jersey and New York area industries with railroad track construction and maintenance services, today **Railroad Construction Company** and **The RCC Family of Companies** have the experience and capability to maintain and construct roadways, bridges, buildings, utility systems and rail facilities, as well as provide environmental remediation, steel fabrication, site work, electrical construction and rehabilitation, and the design and fabrication of specialized railroad equipment through sister companies **RCC Builders & Developers**, **RCC Fabricators**, and **Beach Electric Company**. Today, Mary and Matthew Daloisio (4th generation) are involved in the office operations.

Railroad Construction Company and **The RCC Family of Companies** have completed an impressive list of projects performed in more than nine states for a myriad of public and private owners, running anywhere from 20 to 100 projects at a time, ranging from a few thousand dollars to over \$100 million.

Involvement in industry associations, partnerships with unions, and community service has set our company apart, but the people of **Railroad Construction Company** and **The RCC Family of Companies** are the heart and soul of our history. Our co-workers are a large and experienced group of multi-talented engineers, supervisors, estimators, office staff and field personnel with a commitment to Safety, Quality, Productivity and Having Fun!

At **Railroad Construction Company** and **The RCC Family of Companies**, we have been fortunate to find a circle of people that thrive as a team to fulfill our mission: **To deliver quality construction and engineering services to our customers with professionalism and integrity while providing opportunity to our co-workers, security to their families, as well as sharing our resources to benefit others.** Together, with the solid building blocks of our beginnings and a vision for our future, **Railroad Construction Company** and **The RCC Family of Companies** are dedicated to serving our customers now and for many years to come.

We'd like to share with everyone a few of the projects that significantly shaped and helped **RCC** become the company it is today.



Penn Railroad - Camden, NJ



Coopers Point - Camden, NJ



Hunts Point Terminal - Bronx, NY



Ford Motor - Mahwah, NJ

Railroad Construction Celebrates 85 Years!



Newark City Subway Rail Maintenance Facility
Bloomfield, NJ



Garden State Parkway - Interchange 159



New York City Transit Authority - Coney Island Yard



WMATA - Direct Fixation Track



SEPTA Mainline - Track & Bridge Rehabilitation



NJDOT - Route 78 Truck Weigh and
Inspection Stations



Route 46 over Overpeck Creek
Ridgely Park, NJ



PATH Harrison Yard - Harrison, NJ



Meadowlands Rail Station - East
Rutherford, NJ



PANYNJ - Lincoln Tunnel Toll Building Expansion



Hofstra University Pedestrian Bridge - Uniondale, NY

Port Authority of NY & NJ: Harrison West Transfer Yard

Harrison, NJ

Railroad Construction Co., Inc., in conjunction with the *Port Authority of NY & NJ*, has been actively working at the *PATH* Harrison Yard site since December of 2010. This project, funded as part of the *World Trade Center* reconstruction project, marks yet another time that civil and track work has been performed at the site by **Railroad Construction**.

Work has been on-going through the difficult winter conditions in an effort to maintain a schedule critical to our client. The project has seen the construction of an 1,150 foot retaining wall, which serves as a key piece in the construction for an access road to the western portion of the site. This access road will allow tractor trailers carrying material to access the *PATH* system allowing material to reach the *World Trade Center* site via rail. Civil construction activities have included all grading activities necessary for road and yard construction, installation of electric and other utilities for third rail power and signals, and all drainage on the site.

Railroad Construction is proud to again be constructing track work at Harrison for the *Port Authority* and *PATH*. The current project includes the installation of eight concrete turnouts, two of which are being installed during a weekend track outage. There will be over 2,000 TF of new concrete tie ballasted track being constructed to serve the *World Trade Center* material effort when the project is completed.



Constant coordination with the *Port Authority* and *PATH* has continued **Railroad Construction's** effort to provide a safe, quality project. Continued successful work on the project has been possible with assistance from John Petekiewicz of the *Port Authority of NY & NJ* and Resident Engineer on the project, Jim Hanson, and Joe Hillen at the *Port Authority of NY & NJ*, Mike Galluccio, Joe Galluccio, and Ed Perara at *PATH*, Jim Curry and Tracy Gunther at *CHA*, and Stan Wiecek at *HNTB*. We wish to thank the following subcontractors for performing timely work on the project: **Beach Electric Co., Inc.**, **W. Kelly Equipment Company**, **Garden State Highway Services** and **50 States Engineering**.

Con Edison - Harlem River Tunnel Fit-out

Manhattan / Bronx, NY

Railroad Construction is currently working on the "fit-out" portion of a tunnel project that was recently constructed for *Con Edison*. The tunnel runs underneath the Harlem River and will be used to run gas and electrical utilities from the Bronx to Manhattan. The tunnel consists of two 150 vertical shafts connected by a 670 foot horseshoe shaped horizontal tunnel.

Railroad Construction's scope of work includes the construction of two 16-foot concrete splice vaults on opposite ends of the tunnel, the installation of a service elevator in the Bronx shaft, the construction of a two story building that sits over the Bronx shaft and the restoration of the sites where work was staged at the Manhattan and Bronx shafts. The building or "Head House" will contain the mechanical and electrical systems, including two large 40 HP exhaust fans which will help circulate air through the tunnel.



Construction of the splice vaults took place during the months of February and March 2011. Constant water infiltration to the work area and limited access points for personnel, equipment and material proved to be challenging obstacles on this portion of the project. After spending two cold months in the tunnel, **Railroad Construction** forces surfaced to work on the head house. While only having started work on the head house in early April, the building's concrete structure is almost complete. The remaining masonry, roofing, metal paneling, electrical and mechanical work will take place over the next few months. The project is expected to be finished before the end of 2011.

Railroad Construction would like to thank Tim Stewart, Dan Harm, Sarah Gherman and Greg Eisband and the rest of the *Con Edison* team. Special thanks to Dave Keller of *Haley and Aldrich*. Additional thanks to our subcontractors *Case Contracting*, *Lashay's Construction*, *Bay Crane*, *Precision Concrete Pumping*, *Eastern Concrete*, and *Power Fast, Inc.*

Port Authority of NY & NJ: 65th Street Yard Rehabilitation

Brooklyn, NY

Railroad Construction Co., Inc. is in the process of completing a major rehabilitation to the 65th Street Railroad Yard located in Brooklyn, NY. This project for the Port Authority of NY & NJ has been on-going since October of 2010. The work performed on the project will allow for an increase in traffic across New York Bay via carfloats running between Greenville, NJ and Brooklyn, NY.

The yard will mainly be used by the *New York and New Jersey Railroad*. The project included the replacement of over 1,700 ties and 450 switch timbers. These were replaced to upgrade four tracks in the yard for anticipated heavier car loadings. Ballast was spread, tracks were surfaced and switches upgraded to accept the increase in



traffic. A highlight of the project was the installation of new winch motors on the float bridge. This bridge is a gap between land and the car float carrying the railcars across the bay. The installation of winch motors on the structure will allow for more efficient and safer operation during the process of transferring cars onto car floats. Work on the winch motor installation was another successful project performed by our subcontractor, *Case Contracting*.

Success on the project needed strict coordination with the operating railroad and the owner. We would like to thank Greg Player, Chris Vaccaro, Omar Solomon, and Ron Shaw of the *Port Authority of NY & NJ*; Don Hutton, Jim Christie, James

Latta of *New York New Jersey Rail*; Russell Randazza, Sal Testa and their team at *Case Contracting*.

85th Anniversary Logo Contest

A logo contest was held in March for our co-workers and their family members to design and submit a logo to be used for **Railroad Construction Company's** 85th Anniversary! Twenty-one creative entries were received and are presently on display in our Paterson office. Thank you to all of our co-workers and their family members who participated in the contest. It is our pleasure to announce the winners of the Logo Contest: Kathy Elsaesser (cover design), Clorinda and

Sam Shapiro, and Holly Avilleira. Their designs, a portion of their designs or a combination of their designs may appear on our invitations or memorabilia for our 85th Celebration. We thank Kathy, Clorinda, Holly and everyone who participated for their hard work and the time they put into creating the logo entries and for helping to celebrate **Railroad Construction Company's** 85th Anniversary!

Our congratulations go to.....

Craig and **Christina Catino** on the birth of their son, Benjamin Craig, on March 5, 2011 - 5lbs., 5oz., 18¾ inches.

Linda and **Bill Loscalzo** on the birth of their grandson, Braydon, on March 27, 2011 - 7lbs., 8oz., 20½ inches.

Judy and **Joe Occhiogrossi** on the birth of their grandson, Joseph William, on April 4, 2011 - 6 lbs., 18½ inches.

Lauren and **Craig DeRosa** on the birth of their son, Hayden, on May 3, 2011 - 6 lbs., 9oz., 18 inches, and to Linda and **Ed DeRosa** on the birth of their grandson.

Dawn and **Mike Rosta's** daughter, Sabrina, for receiving First Honors Top 10 in her class; his son, Jarred, for receiving First Holy Communion; and his son, Jack, who won a gold medal in wrestling at the Grapevine Tournament and only lost one match during the entire regular season!

Kelly Williams on the birth of her grandson, Devyn, on June 28, 2011 - 5 lbs., 11oz., 18 inches.

Stephanie and **Adam Schmit** on the birth of their daughter, Sarah Olivia, on August 17, 2011 - 8 lbs., 11 oz., 19¾ inches.

Jan and **Pete Champagne** on the birth of their granddaughter, Elaina Rose, on September 1, 2011 - 7 lbs., 4 oz., 20 inches.

Chris Lee and Christie Ranieri on their engagement on September 4, 2011.

Our 2011 Scholarship Winners!

This year, the Scholarship Committee was presented with many excellent candidates for our two scholarships. Each candidate displayed excellence in academics, school activities and community service. Each is to be commended for his/her hard work and achievements. *Their parents should be extremely proud!* We are happy to announce that this year's winners are:

Cassie Bundy for the *Grace & Alfonso Daloisio, Sr. Memorial Scholarship* (One time \$5,000 award).
Cassie is a Junior at Kean University majoring in Special Ed/Preschool.

Keegan Gorman for the *Andrew J. MacIsaac Memorial Scholarship* (One time \$2,500 award).
Keegan will be attending Clemson University in the fall majoring in Business Management.

RCC Family Co-Workers Volunteering in Our Local Community

On March 11th, 2011, *Oasis* held their 15th Annual Dinner Dance at the *Venetian* in Garfield, NJ. A team of **RCC Family of Companies** co-workers was there to volunteer and additional co-workers showed their support for *Oasis* by attending the gala. *Oasis - A Haven for Women and Children* works daily to make everyday miracles happen in the lives of the women and children in Paterson and the surrounding community. In addition to providing meals and education, *Oasis* now offers many new services including a Workplace Readiness Program and regular screenings and assessments for mental health, domestic violence and substance abuse.

We would like to thank *Oasis* for their commitment to the women and children of Paterson and for allowing us to be a part of such a special organization. We are blessed to work with *Oasis* and are proud to support the phenomenal programming that *Oasis* provides. To read more about *Oasis*, please go to their website, www.oasisnj.org.



Front row: Phrank Devine, Claire Caputo, Sebastian Marin, Lauren Elsaesser, Luz Carrillo. Back row: Brian Lane, Mary Daloisio, Joan Sonn, Sally Woessner, Amy La Rocco, Kelly Williams, Josephine Fernandez, Evelyn Davilla



On May 18, 2011, volunteers from **The RCC Family of Companies** joined in the efforts with *New Jersey Community Development Corporation (NJCDC)*, organizers from non-profit **KaBOOM!** and other volunteers to build a 3,600 square foot playground for the children at School No. 5 in Paterson, NJ.

In approximately six hours, asphalt was transformed into a playground for the children to enjoy. The day was filled with rain but volunteers gathered into groups to pour concrete, move and spread mulch and assemble the playground equipment to create a beautiful playground.

We would like to thank *New Jersey Community Development Corporation (NJCDC)* for inviting us to join in a wonderful community project to give the children in Paterson a safe and fun place to play.

(left to right): Carl DiGirolamo, Nadera James (from *Christ the King Preparatory School*), Phrank Devine, Sally Woessner, Mary Daloisio, Brian Lane, Gig Manville

On June 25th, 2011, eighteen **RCC Family of Companies'** co-workers participated in *Habitat for Humanity* "Corporate Challenge". This year, our team was split into two groups to help build two different homes. They worked on framing, built a retaining wall, cut and set stone pavers and helped complete one home by finishing the trim work, flooring and spreading gravel around the area leading to the deck.

The RCC Family of Companies would like to thank *Habitat for Humanity* for inviting us back to participate in this fun-filled day. Knowing that our team helped to build homes for two deserving families made all of our hard work worthwhile. We are looking forward to next year's Corporate Challenge.

(standing left to right): Carl DiGirolamo, Gig Manville, Greg Fallon, Adam Schmit, Ryan Fallon, Mike Wierzbicki, Luz Carrillo, Bob Garipey, Sally Woessner, Joan Sonn, Kyle Bunker, Amy La Rocco
(kneeling left to right): Rich Lemere, Rick Bunker, Diogo Santos, Peter Santos (not pictured is Renato Sunga)



We'd Like You to Meet....

In March 2001, Norma started working for **RCC Design, Inc.** in the Accounting Department doing accounts payable and payroll in the Fairfield, NJ office. When Norma joined our Paterson, NJ office, she continued to do accounts payable and payroll, but on a larger scale, working for **RCC Design, RCC Equipment Services** and **RCC Fabricators**, eventually adding **Beach Electric** and **RCC Builders & Developers** into the mix to round it all out.



Norma Porter
Beach Electric Co., Inc.

Norma makes sure the invoices flow easily through the system; scanning and indexing them, and making sure the proper co-workers approve their invoices on time so they can be processed. Norma also reviews all credit card purchases for material that the field uses to run the projects and makes sure the invoices are correct before putting them in for payment. Working with Janice Elsaesser and Wendy Carias, who are also in the Accounts Payable Department, Norma feels they are a great team and always help each other out when the need arises. She always has a positive attitude and is cheerful even when dealing with difficult situations.

Norma really enjoys crafting, especially cross stitch, sewing and whatever her latest quilting project may be. She has been married to her husband, George, for 31 years. They have three children: Gregory, 30, who has always been into computers; Christopher, 27, and Stephanie, 25, who are both into playing and watching sports. Norma and George grew up in the same area, but were always a few classes, or parties, away from each other. One year when George was home on leave from the Air Force, they were finally formally introduced and the rest is history. They were married and for six years lived and raised

their children in Nebraska. Even though Norma loved it there, she was not too crazy about the weather - never knowing what to expect! Norma was happy to return to her life in New Jersey and their friends, Claire Caputo, also a co-worker of **Railroad Construction**, and her husband, Shawn, a lifelong friend of George's. Nowadays, Norma and George enjoy a healthy lifestyle by exercising, walking and playing with their two toy poodles, Maui and Cole.



Jimmy Bonpietro, Jr.
Railroad Construction Co., Inc.

Railroad Construction in September 1999 as a track laborer working with some of the legends of our great track team, which include Tony MacIsaac, John Brownlee and the late Andy MacIsaac. Since his beginnings in the track department, Jimmy has broadened his horizons and worked on all types of projects including the EZ Pass Installation, Metro North Croton Harmon Shop, and the

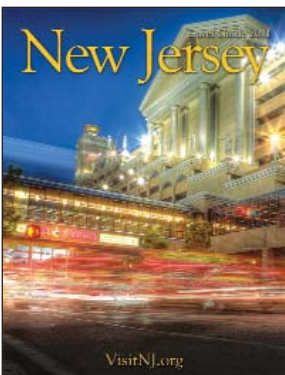
As we always say here at **Railroad Construction**, we are one big happy family. This could not be truer for Jimmy Bonpietro, Jr. He had the honor of working with his father, Jimmy Bonpietro, Sr., a driver with **Railroad Construction**, before he retired to enjoy some time in Florida.

Jimmy started with

Route 46 Hyperbuild Project. Jimmy has even traveled as far as North Carolina to work on the Charlotte Convention Center Track Construction Project. He also spent eight months in Baltimore, MD, working on the construction of a new ethanol terminal. Most recently, Jimmy has been our foreman for the **Port Authority** Homeland Security Improvements project at the George Washington Bridge and is now a key foreman at the **New Jersey Turnpike Authority** Bridge Deck Improvements project. Jimmy knows how to get the most out of his co-workers while maintaining a safe and fun atmosphere.

Jimmy is married to his lovely wife, Nicole, and they both enjoy riding their **Harley Davidson** motorcycles together. Jimmy also is very proud of Gianna, his 13 year old daughter, especially when she is cheerleading. An avid outdoorsman, Jimmy likes to fish and hunt. Nicole and Jimmy are also keeping busy with the latest addition to the family - a puppy!

In closing the interview with Jimmy, he said he is very proud to be a part of the **Railroad Construction** family, as so many of us are.



Make sure you check out www.visitnj.org. This website can be your "go to" source for all there is to do and see in this beautiful Garden State of ours.

You can narrow your search by region, interests, destinations or take a look at the calendar of events. Use the "Build Your Trip" tool and add everything you're interested in as you explore the website.

Also available for download is your free copy of the 2011 New Jersey Travel Guide (pictured here), as well as free maps, several ethnic travel guides, a golf guide, a lighthouse guide and more....so much to choose from!

Railroad Construction Company, Inc.

75-77 Grove Street
Paterson, NJ 07503

PRESORTED
STANDARD MAIL
U.S. POSTAGE PAID
S.HACKENSACK,NJ
897

EQUAL OPPORTUNITY / AFFIRMATIVE ACTION EMPLOYER

CROSSINGS

Railroad Construction Company, Inc.

75-77 Grove Street, Paterson, NJ 07503
voice: 973.684.0362 / fax: 973.684.1355
email: info@RailroadConstruction.com
website: www.RailroadConstruction.com

Beach Electric Co., Inc.

67-69 Grove Street, Paterson, NJ 07503
NJ License #14420
voice: 973.413.1900 / fax: 973.684.7681
email: info@BeachElectricCo.com
website: www.BeachElectricCo.com



RCC Builders & Developers, Inc.

65-67 Grove Street, Paterson, NJ 07503
voice: 973.684.9957 / fax: 973.684.8916
email: info@RCCBuilders.com
website: www.RCCBuilders.com

RCC Fabricators, Inc.

2035 Rte 206 South
Southampton, NJ 08088
voice: 609.859.9350 / fax: 609.859.9355
email: info@RCCFabricators.com
website: www.RCCFabricators.com

To receive our newsletter electronically, go to our website at www.railroadconstruction.com and click on:

SUBSCRIBE TO NEWS AND INFORMATION

EQUAL OPPORTUNITY / AFFIRMATIVE ACTION EMPLOYER